

### F. Craftsman Microtork® 1/2-Inch Drive Wrench with Deluxe Case

- Micrometer-type scales stamped into housing show inch and metric torque settings.
- Accurate to ±4 percent, clockwise or right-handed reading greater than or equal to 20 percent of capacity.
- Measures 20 to 150 ft.lbs. in 1 ft.lb. increments. Warranted.\*

009-44595

### 3/8-Inch Drive Wrench

Measures 25 to 250 in.lbs.  
009-44593 Wt. 2.25 lbs.

### 3/8-Inch Drive Wrench

Measures 10 to 75 ft.lbs.  
009-44594 Wt. 2.69 lbs.

### G. Craftsman Digitork® 1/2-Inch Drive Torque Wrench with Digital Readout and Deluxe Case

- Gives precise inch and metric torque settings; digital readout.
- Accurate to ±3 percent, clockwise or right-handed reading greater or equal to 20 percent of capacity.
- Measures 25 to 250 ft.lbs. in 2 ft.lb. increments. Warranted.\*

009-44597

### 3/8-Inch Drive Torque Wrench

Measures 5 to 80 ft.lbs.  
009-44596 Wt. 2.75 lbs.

### H. Craftsman 1/2-Inch Electronic Torque Wrench

- Features strain gauge technology for 3% or better accuracy; large LCD display and color-coded LEDs.
- Push-button operation adjusts from 20 to 200 ft.lbs., 240 to 2,400 in.lbs. and 27.1 to 271.2 Newton-meters.
- Includes case; batteries not included. 90-day limited warranty.\* Wt. 5.2 lbs.

009-47712

### 3/8-Inch Drive Electronic Torque Wrench

009-47711 Wt. 3.6 lbs.



FEATURES  
DIGITAL  
READOUTS



### J. Craftsman 2-Piece Gear Puller Set

- Features reversible arms and multiple settings for accessing hard-to-reach areas.
- Lifetime Warranty.\* Wt. 5.25 lbs.

009-47368



### K. Posi Lock™ 4-Piece Mini Puller Set with Case

- Includes four mini pullers: two-jaw (1-ton, 2-ton) and three-jaw (1-ton, 2-ton).

Warranted.\* Wt. 7.82 lbs.

009-30174



### L. Posi Lock™ 4-Piece Hub Puller Adapter Set

- Easily removes auto/industrial fans by providing a solid connection between the puller and fan hub.
- Includes 5-ton Posi Lock puller, one large and one small collar to remove hubs from 0 to 2 inches, plus a tip reducer/extender.

Warranted.\* Wt. 8.42 lbs.

009-30160



### M. KD Tools® 2-Piece Ratcheting Puller Set (2- & 5-Ton)

- Indexing-jaw design removes pulleys faster and easier.
- Converts between a two- and three-leg puller; reverses jaws from external to internal style in seconds.

Wt. 6.2 lbs.

009-23053

### 2-Ton Ratcheting Puller

009-23050 Wt. 1 lb.

### 5-Ton Ratcheting Puller

009-23051 Wt. 3.3 lbs.

### 7-Ton Ratcheting Puller

009-23052 Wt. 7.2 lbs.



# CHECK ENGINE LIGHT ON? It's that simple with Craftsman® and

## CRAFTSMAN® & INNOVA® “CHECK ENGINE” LIGHT & ABS DIAGNOSTIC TOOLS

- Each works with all 1996 and newer cars, light trucks, SUVs and minivans—foreign and domestic, including those with CAN.
- All feature a plug-and-play user interface and patented single-screen display.
- LEDs indicate if vehicle is ready to pass emissions test; automatic re-link feature helps verify repairs.
- Units turn off “Check Engine” light, clear diagnostic codes, and reset I/M monitors.

### A. Craftsman® CanOBD2 CarReader

- Save time and money by doing your own vehicle maintenance with this plug-and-play diagnostic tool.
- LEDs indicate if your vehicle is ready to pass an emissions test; turns off the “Check Engine” light; internet updateable. Wt. 1 lb.

009-14063

69.99



### B. Craftsman CanOBD2 Diagnostic Tool

- Diagnose “Check Engine” light warnings on 1996 and newer vehicles, including CAN; plug-and-play interface displays over 20 values.
- Features LED display for quick emissions check.
- Retrieve/display manufacturer-specific diagnostic codes, I/M readiness status, and freeze frame data.
- USB cable; trilingual. Wt. 2.5 lbs. 009-87702

### C. Craftsman CanOBD2 Scan Tool

- Designed for all 1996 and newer cars, light trucks, and SUVs—domestic, Asian and European import.
- Features backlit screen display; LED display for quick emissions check.
- View, record, playback and graph enhanced live data; perform mode 1–9 diagnostics, including VIN# ID.
- Optional RepairSolutions® for the most likely VIN-specific fix. Wt. 3 lbs. 009-20890

### D. Craftsman CanOBD2 & 1 Scan Tool Kit

- For all 1996 and newer vehicles, and most 1982–95 OBD1 Ford, GM, Chrysler, Jeep, Toyota and Lexus.
- OBD2 diagnostics include enhanced live data values, OEM level DTC information and freeze frame details; retrieves diagnostic modes 1–9.
- PC software allows printable reports.
- Trilingual. Wt. 7.5 lbs. 009-20899



## NOW EVERYONE CAN DIAGNOSE ALL CHECK ENGINE LIGHT PROBLEMS

## INNOVA

DIAGNOSTICS MADE EASY



### TESTS COMPUTER CIRCUITS



### H. Innova® Computer Safe Test Light/Circuit Tester

- Lightweight and easy-to-use; quickly identifies if voltage is present.
- Transparent handle reveals bright LEDs to identify connections.
- Includes 6-ft. test lead with heavy-duty ground clamp. Wt. 0.5 lb.

009-01479



### TESTS AUTO CIRCUITS



### J. Innova® Smart Test Light™ for Auto Electrical Circuits

- Safely check voltage and/or ground on electronic systems. Connect using lighter/power plug or detachable alligator clips. 6-foot leads for extra long reach.
- Transparent, ergonomic handle shows bright LEDs - White: proper connection; Red: voltage present; Green: ground.

009-14790 Wt. 0.7 lb.



### K. Craftsman Professional® Digital Timing Light

- For 2- and 4-cycle engines; LED tach display (0–9999 rpm) and advance display to 1/10.
- One-touch controls with precise microprocessor-controlled circuitry.
- Xenon strobe for use as flashlight while connected. Wt. 2 lbs.

009-14066

### Advanced Timing Light

Analog unit.

009-14065 Wt. 2.5 lbs.



## FOUR OPERATING MODULES

### L. Craftsman Professional Digital Timing Light

- View and adjust base timing and overall ignition advance on conventional and DIS (distributorless) 2- and 4-cycle ignition systems.
- Serviceable leads include heat-withstanding metal pickup; fits 10-mm ignition wires.
- Uses heavy-duty battery with Dwell clamps; includes case. Wt. 3.6 lbs.

009-87701



# DIAGNOSE IT YOURSELF!

PanAmericanDistribution.com

Email: panamericandistribution@gmail.com



## Innova® auto diagnostic tools



**SHOWS FREEZE FRAME DATA**



Catalog/Online EXCLUSIVE

### E. Craftsman OBD2 Scan Tool + ABS/SRS

- Diagnose "Check Engine" light problems on all 1996 and newer vehicles.
  - Check ABS and airbag problems on most 1996 and newer GM, Ford, and Chrysler vehicles.
  - Provides live data with graphing and emission status; diagnostic software. Wt. 3 lbs.
- 009-25488

**DIAGNOSE 1996 AND NEWER ABS & AIRBAG PROBLEMS**



**DISPLAYS OBD2 LIVE DATA**



Catalog/Online EXCLUSIVE

### F. Innova® 1203 CanOBD2 & 1 Tool

- Fast diagnosis of all 1996 and newer vehicles, as well as most 1981 to 1995 Ford, GM, Chrysler and Toyota vehicles.
  - Reads/erases codes; captures and displays freeze-frame data; links to all OBD2 protocols.
  - Trilingual on-screen definitions; includes PC software to generate and print custom reports; internet updateable. Wt. 6 lbs.
- 009-47217

**PULL CODES ON BOTH OBD1 & 2 VEHICLES**



**DIAGNOSE OBD2 & 1 VEHICLES**

D



### M. Actron CP9580 AutoScanner® Plus with CodeConnect™ and ABS

- CodeConnect hot key helps prioritize troubleshooting by displaying Top Reported Fixes specific to make, model, year and engine.
  - Record and playback live engine data.
  - ABS code read/erase capability for most 1996 and newer GM, Ford and Chrysler vehicles.
  - Optional battery power, field updateable via USB port, and data printable to PC.
  - Trilingual manual (English, Spanish, French). Wt. 1.25 lbs.
- 009-81240

Catalog/Online EXCLUSIVE

### G. Innova® 3160 CanOBD2 Professional Scan Tool with ABS Diagnostics

- View enhanced live data on a backlit screen; manufacturer specific diagnostics; freeze frame data; record data on OBD2 vehicles.
  - View/diagnose anti-lock braking system faults on 1996 and newer GM, Ford and Chrysler vehicles.
  - One tool turns off both the "Check Engine" and ABS lights; ShopSoftware included. Wt. 3 lbs.
- 009-83278

**INNOVA**  
DIAGNOSTICS MADE EASY

**DIAGNOSE 1996 AND NEWER ABS PROBLEMS**



### N. Actron AutoScanner® Trilingual OBD2 & CAN Scan Tool

- View live, real-time engine data in seconds.
  - Displays freeze frame data, I/M monitors (emissions), VIN#, OBD2 Drive Cycle Mode, State OBD Check; resets MIL, turns off "Check Engine" light. Wt. 1 lb.
- 009-81239



### TRULINK™ TECHNOLOGY

- Testing has proven TruLink to be the most effective scan tool technology yet.
- Ensures that all Actron® OBD2 tools will link to and communicate with every vehicle sold in the US since 1996.

### P. Actron PocketScan® Plus OBD2 & CAN Code Reader

- Displays freeze frame data, I/M monitors (emissions) and VIN#. Wt. 0.75 lb.
- 009-81238



latest price online

PanAmericanDistribution.com

Email: panamericandistribution@gmail.com

Get the Latest Price. sears.com/shopstools

automotive specialty





Catalog/Online EXCLUSIVE

**A. KD Tools® Slide Hammer Puller Kit**

- For flange-type axles, oil seals and other press fit parts.
- Includes shallow and deep flange, slide hammer, 2- and 3-way yokes, center bolt and cone, 3-piece adapter set, and leg package with screws. Wt. 17 lbs.

009-47008

Catalog/Online EXCLUSIVE

**B. KD Tools® 14-Piece Master Tubing Service Set**

- Everything you need for complete tubing service.
- Double flare, bend, cut, ream and deburr; includes mini tubing cutter, bender, deburring tool, flaring adapter kit, holding bar, yoke, instruction card and case. Wt. 6.1 lbs.

009-47752



Catalog/Online EXCLUSIVE

**C. KD Tools® 8-Piece Master Sensor Socket Set**

- Specially designed sockets and tools to remove and install oxygen sensors, oil pressure sending units, and vacuum switches.
- Case with removable lid for tool drawer storage. Wt. 5.68 lbs.

009-47020

Catalog/Online EXCLUSIVE

**D. KD Tools® Bearing Race and Seal Set**

- Install tapered bearing races and seal without damage to component or housing.
- Includes driver handle and 1.565, 1.750, 1.961, 2.325, 2.470, 2.555, 2.830, 2.995 and 3.180-in. driver sizes.
- Case and reference card. Wt. 4.74 lbs.

009-47007



Catalog/Online EXCLUSIVE

**E. KD Tools® 12-Piece Fuel Line Disconnect Kit**

- Tools to separate fuel, filter, transmission, air conditioning fittings, and fuel tank return lines on most vehicles and heavy equipment.
- Features an assortment of Ford, GM, and Chrysler disconnects.
- Instruction card and case. Wt. 2.07 lbs.

009-47021

Catalog/Online EXCLUSIVE

**F. KD Tools® Power Steering Pump Pulley Kit**

- Remove and install power steering pump pulleys for most domestic vehicles.
- Adapters for GM 3.1 L, 3100, 3400, and 3800 V6 engines, GM 2.3 L Quad 4, Ford 4.6 L, 5.4 L and 5.8 L modular V8s.
- Fits 1 1/8, 1 1/4, 1 5/16 and 1 3/8-in. pulley hub diameters. Wt. 2.5 lbs.

009-47022



**G. Craftsman Professional® Brake Bleeder and Auto Test Kit**

- Everything for performing vacuum/pressure related engine diagnostics, tune-ups, fluid transfer, evacuation and one-person brake bleeding.
- Includes adapters, tapered manifold and vacuum cap plugs, connecting tubes, master cylinder refill kit, case and more. Wt. 4.2 lbs.

009-14005

**H. Craftsman® Vacuum Pump/Brake Bleed Kit**

- Includes manual, bleed/vacuum test adapter, fluid reservoir, tubing and seal kit.
- 1-year warranty.\* Wt. 2.8 lbs.

009-20930



\*Warranted, see page 134a.



# FOR DIGGIN' INTO THE DETAILS

PanAmericanDistribution.com

Email: panamericandistribution@gmail.com

## specialty sets for specialized tasks

# automotive specialty



### EVERYTHING YOU NEED FOR WORKING ON YOUR BRAKES

Catalog/Online EXCLUSIVE  
**J. Mityvac® Fluid Evacuator and Manual Operated 8.8 Liter Fluid Evacuator and Dispenser**

- Evacuate and dispense fluids like oil, coolant, brake fluid and more.
- Automatic flow valve control prevents overfilling; shuts off at 8 liters.
- Includes five feet of flexible hose and two rigid dipstick tubes for engine oil removal. Wt. 7 lbs.

009-42277

Catalog/Online EXCLUSIVE  
**K. PBT Manual Brake Bleeder Kit**

- Allows one man brake bleeding.
- Brake bleeder universal rubber fitting holds securely on brake bleed screw; internal submersed tube prevents air drawback.
- Brake fluid refiller retaining clip provides positive attachment to all master cylinder reservoir types. Wt. 1 lb.

009-81038

Catalog/Online EXCLUSIVE  
**L. KD Tools® 15-Piece Brake Service Set**

- Adjust brake drum/shoe clearance, remove/install brake pads or shoe return springs.
- Includes drum brake adjusting tool, brake spring pliers, universal brake spring tool, disc brake piston tool, GM-Ford disc brake piston tool, disc brake spreader, brake lining thickness gauge, eight hex sockets, instruction card and case. Wt. 6.2 lbs.

009-47753

Catalog/Online EXCLUSIVE  
**M. Mityvac® Shop Air Brake Bleeder/Evacuator**

- Uses shop air to bleed brakes or hydraulic clutches.
- 1.9-quart reservoir removes easily for emptying.
- Includes all accessories needed for bleeding and evacuating. Wt. 4.8 lbs.

009-42276

Catalog/Online EXCLUSIVE  
**N. PBT 4-in-1 Brake Pad Spreader™**

- The one tool for both fixed and floating calipers; fixed with twin and quad pistons, floating with single and twin pistons.
- Easy left and right side use.
- Designed to retract the toughest caliper pistons. Wt. 2.8 lbs.

009-29464

PanAmericanDistribution.com

Email: panamericandistribution@gmail.com



3-TON CAPACITY

The Tail Bone™



**CRAFTSMAN**®

**A. Craftsman® 3-Ton Floor Jack, Stands, 36-Inch Creeper Combo**

- Jack has a lift range of 5 1/2 to 19 1/4 in. and a 3-ton maximum load.
- Creeper has a 300-lb. maximum load. Warranted.\* Wt. 73 lbs. 009-50188

Catalog/Online EXCLUSIVE

**B. The Tail Bone™ Chair**

- Designed to be comfortable, durable and easy to use.
- 5-in. wheels, tripod base, and bucket seat with 12-in. seat height.
- 100% Made in USA. Warranted.\* Wt. 18 lbs. 009-81022

# HELP WITH THE HEAVY LIFTING

Comfort designed creepers and durable lift jacks



**THE BONE**®



C

D

E

**5-INCH WHEELS**



Catalog/Online EXCLUSIVE

**C. The Bone™ Creeper**

- Unique wheel placement on outboard pods; easy-rolling 5 1/8-in. wheels.
- Extra-low, 1 3/4-in. ground clearance.
- 47L x 25 1/2W in. 100% Made in USA. Warranted.\* Wt. 22 lbs. 009-51000

Catalog/Online EXCLUSIVE

**D. Craftsman Professional® Roller Creeper**

- Four 6-in. rollers make for easy rolling, even on gravel or grass.
- 40-in. frame made of heavy-duty, powder-coated 1-in. steel tubing.
- 40L x 20W x 5H in. Wt. 26 lbs. 009-51168

**E. Craftsman Professional New Generation Racing Creeper**

- 40-in. creeper has integrated steel framework covered by foam padding.
- Four 2 1/2-in. polyurethane inline rollers for quiet and effortless maneuvering. Wt. 20 lbs. 009-51150



**F. Craftsman Creeper/Seat**

- 40-in. Creeper pans to seat; wilton.com quick-release clip.
- 7 x 10-in. headrest provides excellent back support in the seat position.
- 40L x 17W x 6 1/2D in. Wt. 26 lbs.

009-51159



F



**CREEPER & SEAT IN ONE**

**G. Craftsman Professional Aluminum 1.5-Ton Motorcycle Jack**

- Lightweight aluminum construction.
- New 3 1/2-in., low profile makes unit ideal for lifting, cleaning and moving motorcycles and ATVs.
- Locking mechanism secures vehicle at 4 levels.
- Adapter plates increase lifting range from 3 1/2 to 19 in.
- Warranted.\* Wt. 42 lbs.

009-50191

Accessories/props not included.



**MOTOR BIKE LIFTING**



Email: panamericandistribution@gmail.com



**H. CRAFTSMAN ALUMINUM 2-TON CAPACITY FLOOR JACK**

- Three-piece, welded aluminum arm for extra strength; ear and side frame handles for easy lifting.
- Lifting range is 3 3/4 to 18 1/2 in. Meets ANSI/ASME safety standards. Wt. 42.7 lbs.

009-50239



**J. CRAFTSMAN 3-TON SERVICE JACK**

- Large heavy-duty casters with 360-degree pivot for easy positioning.
- 3-ton lifting capacity with a lifting range of 5 1/2 to 19 1/4 in.
- Includes jack, handle and manual. Wt. 73 lbs.

009-50139

K

**K. CRAFTSMAN PROFESSIONAL 4-TON LOW PROFILE/HIGH LIFT SERVICE JACK**

- 8,000-lb. maximum capacity and a lifting range of 4 to 20 in.
- Jack features heavy-duty chassis, overload valve system and bypass system. Wt. 101 lbs.

009-50168



**3-TON CAPACITY**



**4-TON CAPACITY**

M



**L. CRAFTSMAN 3-TON HIGH LIFT JACK STANDS**

- Steel jack stands have a high lift range of 13 1/2 to 21 in.
- Services sport utility vehicles and automobiles.
- Set of two. Wt. 21 lbs.

009-50159

**M. CRAFTSMAN PROFESSIONAL 4-TON JACK STANDS**

- Rated capacity of 8,000 lbs. per pair.
- Ratchet design for secure adjustment; counter-weighted pawl with quick adjustment control.
- Range: 12 to 17 5/16 in. Wt. 25 lbs.

009-50163

**ULTIMATE LIFTING FOR THE PROS**

N



**N. CRAFTSMAN PROFESSIONAL 12-TON AIR ACTUATED BOTTLE JACK**

- One-piece base with safety valve for stable, controlled lowering.
- Range: 9 1/2 to 18 5/8 in. Wt. 26.95 lbs.

009-50163

Email: panamericandistribution@gmail.com



Sears BLUE TOOL CREW

**Need help choosing the right jack. Call now!**

**1-877-4BLUCRW**  
Expert tool tips and advice from people who know tools.

PanAmericanDistribution.com

\*Warranted, see page 134a.

automotive specialty



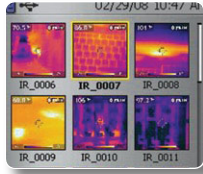
## THERMAL IMAGING

- Detects minor variations in temperature that may indicate electrical or moisture problems.
- Finds hot spots.
- Locates water damage sources.
- Finds missing insulation and leaky air ducts.

## SPACE AGE TECHNOLOGY

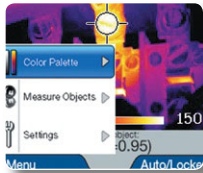


## UPLOAD IMAGES TO PC



## BASIC 60X60 RESOLUTION

## EASY TO NAVIGATE MENU



## FOR THE PROS 120X120 RESOLUTION REQUIRED BY BUILDING CODES



Catalog/Online EXCLUSIVE

### A. FLIR® i3 Compact Thermal Imaging Camera

- Weighing only 12 oz., this handheld camera delivers 60 x 60 resolution (3600 pixels) with thermal sensitivity of <math><0.15^{\circ}\text{C}</math> @ 25°C.
- Focus-free lens for convenient viewing with a 2.8-in. high-resolution color LCD; display includes a thumbnail image gallery and the 512MB micro SD card (included) holds up to 5000 images.
- Includes Li-Ion rechargeable battery with 100-240 AC adapter/charger, 512MB micro SD card, miniSD adapter, USB mini-B cable, built-in manual lens shutter, hand strap and hard case. Warranted.\* Wt. 1.4 lbs.

009-29647

Catalog/Online EXCLUSIVE

### B. FLIR® i7 Compact Thermal Imaging Camera

- Designed for professionals; camera includes same features offered by the FLIR i5, plus greater resolution of 120 x 120 (14,400 pixels) required by building codes.
- Ability to capture an area from a distance and read min/max. spots and isotherm (above and below zero measurements).
- Thermal sensitivity of <math><0.1^{\circ}\text{C}</math> @ 25°C.
- Includes Li-Ion rechargeable battery with 100-240 AC adapter/charger, 512MB micro SD card, miniSD adapter, USB mini-B cable, built-in manual lens shutter, hand strap and hard case. Warranted.\* Wt. 1.4 lbs.

009-81380

Catalog/Online EXCLUSIVE

### FLIR® i5 Compact Thermal Imaging Camera

Delivers 80 x 80 resolution (6400 Pixels)  
009-87802 Wt. 1.4 lbs.



Catalog/Online EXCLUSIVE

### C. Craftsman Professional® 1800-Degree Non-Contact Dual Laser Infrared Thermometer

- Lasers converge to define most accurate measurement spot; measures a 1-inch spot from 30 inches; 150 millisecond response.
- Adjustable emissivity increases accuracy for different surfaces; molded housing, white backlit display, and auto off.
- Measures -58°F to 1832°F. Warranted.\* Wt. 0.4 lb. •

034-14079

### D. Craftsman Professional 1400-Degree Laser Infrared Thermometer with K-Type Temperature Probe

- Measures a 1-inch spot from 13 inches.
- Laser pointer identifies target.
- Thermocouple allows surface and submerged readings.
- Displays highest, lowest, average and max-minus-min values.
- Molded housing; auto-off; 9V battery (not included).
- Measures -58°F to 1472°F. Warranted.\* Wt. 0.54 lb. •

034-81998



C

D



\*Warranted, see page 134a.  
• See page 134a for laser use and precautions.





# VIDEO BORESCOPIES

your eyes can't go

PanAmericanDistribution.com

Email: panamericandistribution@gmail.com

2.4-INCH MONITOR

**EXTECH**  
INSTRUMENTS  
A FLIR COMPANY

E 3.5-INCH MONITOR



DETACHABLE VIDEO SCREEN



Catalog/Online EXCLUSIVE

**E. Extech® Instruments Flexible Video Borescope Wireless Inspection Camera with Detachable 3.5-Inch TFT/LCD Monitor**

- Detachable wireless display can be used from up to 32 feet away; includes memory card for capturing JPEG images or AVI video.
- Features 39-in. flexible gooseneck with 17-mm (0.66-in.) waterproof camera and two built-in bright LED lights.
- Includes four AA batteries, memory card, SD adapter, USB cable, extension tools, video cable, AC adapter, magnetic base stand and case. Model #BR200. Wt. 1.4 lbs.

009-80788

PanAmericanDistribution.com

**VIDEO BORESCOPIES**

- Clear sight in tight spaces:
- Cramped engine compartments.
  - Small appliances.
  - Plumbing fixtures.
  - Through walls while running electrical hook-ups.

Catalog/Online EXCLUSIVE

**F. Extech® Instruments Video Borescope Inspection Camera with 2.4-Inch TFT/LCD Screen**

- Perfect for inspecting inside walls, ducts and engines; features 39-in. flexible gooseneck with 17-mm (0.66-in.) waterproof camera and two built-in bright LED lights.
- Video output connects to any video monitor; add up to two extension cables and maintain video resolution.
- Includes four AA batteries, extension tools, video output cable and case. Model #BR100. Wt. 1.3 lbs.

009-81044

**G. Extech® Video Borescope Inspection Camera**

- 17-mm diameter camera with 2.4-in. color TFT/LCD monitor.
- Flexible gooseneck cable retains configured shape.
- 2 LED lamps, waterproof camera, extension tools and batteries. Wt. 1.9 lbs.

034-82010

Catalog/Online EXCLUSIVE

**H. General® The Seeker 300 Video Inspection System**

- Slim, 12-mm (.47-in.) diameter probe is waterproof to IP67; ideal for automotive and other challenging inspections.
- Large monitor offers crystal clear images; ergonomically angled with the probe for no-strain gripping and viewing.
- Includes 9V battery, 3 extension tools, mini screwdriver, manual and water-resistant hard case. 3-year warranty.\* Wt. 6 lbs.

009-80726

Catalog/Online EXCLUSIVE

**J. General® The Seeker 400 Wireless Video Inspection System**

- Detachable 3 1/2-in. wireless color monitor with 12 mm (.47-in.) diameter probe; can be used from up to 32 ft. away; built-in magnet and stand free up your hands.
- Unique "Streaming Video" option enables live video conferencing over Skype.
- 4x zoom and 180° image rotation.
- Includes 2 Li-Ion batteries, charger with 1-to-2 cable, 2GB SD card, USB and AV cables, 3 extension tools, manual and water-resistant hard case. 3-year warranty.\* Wt. 4.5 lbs.

009-25182



NO-STRAIN PISTOL GRIP



VIDEO OVER INTERNET CAPABILITY

shopyourway rewards

Email: panamericandistribution@gmail.com

join now. earn today. it's free. 129

automotive specialty





A

B

**LoZ TECHNOLOGY PREVENTS FALSE READINGS**

**DESIGNED FOR FIELD TECHNICIANS**

**A. Fluke® 117 Electrician's Multimeter with VoltAlert™**

- VoltAlert technology allows testing for non-contact voltage directly from the meter for faster results.
  - One-handed portability, large display and white LED backlight.
  - Compatible with optional magnetic hanger. Wt. 1.34 lbs.
- 034-81377

**B. Fluke® 115 Multimeter**

- True-RMS meter provides easy, compact one-handed operation.
  - Resistance, continuity, frequency, capacitance and diode test.
  - Compatible with optional magnetic hanger. Wt. 1.34 lbs.
- 034-81341



C

D

**OPENJAW™ MEASUREMENT**

**SMALL SIZE FITS INTO TIGHT SPACES**

**C. Fluke® Volt Tester**

- Features easy and accurate Openjaw™ current measurement.
  - Tests voltage, continuity, and current in one compact tool.
  - Rugged enough to withstand a 10-ft. drop.
  - Includes detachable probes and 2 AA batteries. Wt. 00 lbs.
- 034-81333

**D. Fluke® 322 Clamp Meter with Soft Carrying Case**

- Precise low-current measurement with better than 2% basic accuracy.
  - Compact; controls positioned for one-handed operation.
  - Features display hold and auto shut-off; includes 2 AAA batteries. Wt. 1.75 lbs.
- 034-81326

**80 SUPER BRIGHT LED LIGHTS**

**SMART AND SIMPLE**



**J. Craftsman 80-LED Rechargeable Folding Work Light**

- 80 Super Bright long-life LED lights with 3-way rocker switch for 2-level lighting.
  - Reflective strips; adjustable hinge and hook.
  - Two powerful magnets secure to most metals. Wt. 2.5 lbs.
- 034-73950



**K. Craftsman 35-LED Work Light**

- Plugs in or runs up to 7 1/2 hrs. per charge.
  - Sturdy polycarbonate lens and body.
  - 35 bright LEDs; swivel-top hook; spotlight.
  - Includes AC and DC chargers. Wt. 1.6 lbs.
- 034-73904



**L. new Craftsman 30-LED Screw-In Work Light**

- Uses your existing drop light cord to brightly illuminate work areas.
  - 30 ultra bright LED lights and 3-position rocker switch; high or low light output.
  - 360° rotating swivel hook and tapered polycarbonate lens. Wt. 0.9 lb.
- 034-73955



**M. Craftsman Cord Reel with 26-Watt Fluorescent Work Light**

- Reel with 30-ft. 14/3 cord mounts to floor or ceiling.
  - Convenience outlet; UL listed. Wt. 10 lbs.
- 034-73954



**N. Craftsman 1000W Tripod Light with Portable Stand**

- Quick-release extends to 70 inches tall; provides 250, 500, 750 or 1000 watts of light.
  - Cool touch, cushioned-grip handles; two 500W bulbs; 12-ft. cord. Wt. 16.2 lbs.
- 034-73825

\*Warranted, see page 134a.





PanAmericanDistribution.com

Email: panamericandistribution@gmail.com



**MEASURES CURRENT WITHOUT DISCONNECTING**

**WATERPROOF, DUSTPROOF & DROP-PROOF**

**INPUT COVERS PROTECT METER FROM INCORRECT TEST LEAD POSITION**

**E. Craftsman Professional® AC/DC Clamp Ammeter**

- Measures AC/DC current without disconnecting the circuit.
- Measures to 1% accuracy; also measures voltage and resistance.
- Includes test leads, K-type thermocouple and belt holster; UL Listed/CAT III-600V. Wt. 1.06 lbs. 034-73756

**F. Craftsman Professional True-RMS Multimeter**

- Waterproof, dustproof and drop-proof up to 6 feet.
- Measures voltage, current, resistance, temperature and more.
- Molded housing and large backlit display.
- Meets IP67/UL listed/CAT IV-600V; 1000V input protection. Wt. 1.5 lbs. 034-82003

**G. Craftsman® Multimeter**

- Waterproof, dustproof and drop-proof up to 6 feet.
- Measures voltage, current, resistance, temperature and more.
- Molded housing and large backlit display. Wt. 1.05 lbs. 034-82005

**H. Craftsman Digital Multimeter**

- Input covers also restrict turning of dial to incorrect position.
- Measures voltage, current, resistance, temperature and more.
- Autoranging with large LCD.
- Includes test leads and temperature probe. UL listed. Wt. 0.85 lb. 034-82175

# TESTING MAKES THE GRADE



**P. Extech® Instruments Multimeter Test Kit**

- Full-featured Multimeter tests AC/DC voltage and current; resistance and diode/continuity test.
- Also tests 9V and 1.5V batteries. Non-contact voltage tester for 120V/240V circuits.
- Includes test leads. Warranted.\* UL Listed. Wt. 1.43 lbs. 034-14173



**Q. Extech® Home Inspection Kit**

- Four inspection items in one handy kit.
- Includes a Moisture Meter, Receptacle Tester, Infrared Thermometer and Borescope.
- Separate prices total Wt. 2.75 lbs. 034-82015 199.99



**R. Craftsman Test Instrument Kit**

- Auto Ranging Multimeter, laser-directed Infrared Thermometer measures from -58°F to 1000°F (-50°C to 537°C), clamp adapter measures high AC current (for use with the multimeter) and a non-contact AC voltage tester.
- Separate prices total Warranted.\* UL listed. Wt. 2.8 lbs. 034-82004



METERSUPPORT.COM FOR MORE METER INFO

PanAmericanDistribution.com

Email: panamericandistribution@gmail.com

automotive specialty



GO ONLINE TO  
SEE MORE WELDERS

PanAmericanDistribution.com

Email: panamericandistribution@gmail.com

**CRAFTSMAN®**

**40-130  
AMP  
RANGE**

**B new**

**35-180  
AMP  
RANGE**

**MIG WELDERS**

- Wire feed.
- Create less heat.
- Weld faster.
- Less metal distortion.
- Mild steel and cast iron.



Catalog/Online EXCLUSIVE

**B. new Craftsman Wire Welder with Cart**

- Ready to Flux-Core weld right out of the box.
- Welds mild steel, aluminum, stainless steel and cast iron (requires correct wire, regulator and gas).
- Multiple voltage settings; fan cooled.
- Tweco® compatible welding torch. Wt. 59 lbs. 009-20504



**A. Craftsman® Flux-Cored/MIG Wire Welder with Cart**

- Welds mild steel—right out of the box; capable of welding aluminum, stainless steel and cast using correct wire and gas.
- Multiple power settings for welding accuracy.
- Automatic thermal overload protection.
- Fan cooled for higher performance.
- Tweco® compatible welding torch.
- Includes face shield, hammer & brush, and flux-cored wire.

009-20569



**35-235  
AMP  
RANGE**

**F new**



**ARC WELDERS**

- Easy and versatile.
- Basic welding.
- Good for welding thicker metals.

Catalog/Online EXCLUSIVE

**F. new Craftsman Arc Welder**

- Ready to weld right out of the box.
- Welds mild steel, aluminum, stainless steel and cast iron (requires correct electrode).
- Includes face shield, chipping hammer & brush, electrode holder and ground clamp. Wt. 89 lbs. 009-20505

PanAmericanDistribution.com  
132 sears.com/shoptools/ 1.877.4BLUCRW (425.8279)

Email: panamericandistribution@gmail.com

**MORE WELDING**



# THE TOP 4 WELDING BRANDS

PanAmericanDistribution.com

Email: panamericandistribution@gmail.com

for MIG, arc, TIG, and plasma cutting

automotive specialty

**LINCOLN**<sup>®</sup>  
**ELECTRIC**

**C 35-88  
AMP RANGE**



Catalog/Online EXCLUSIVE  
**C. Lincoln<sup>®</sup> Electric Handy MIG Welder (K2185-1)**

- Welds mild steel from 24 gauge to 1/8 in.
- Fan-cooled for long life.
- Includes everything you need to get started.
- Safely keeps wire "cold" until trigger is pressed. Wt. 46 lbs.

009-20580

**THERMAL ARC**

**D 20-135  
AMP RANGE**



Catalog/Online EXCLUSIVE  
**D. ThermalArc<sup>®</sup> FP135 MIG/Flux Core Welding System**

- Features a quick-change internal polarity adjustment; designed to operate from a standard household outlet.
- Delivers maximum output of 135 amps. Wt. 56 lbs.

009-81135

**HOBART**<sup>®</sup>  
WELDING PRODUCTS

**E 25-140  
AMP RANGE**



Catalog/Online EXCLUSIVE  
**E. Hobart HANDLER<sup>®</sup> 140 #500500**

- Hobart's most powerful 115V welder.
- Ready to weld without shielding gas.
- Weld 24 gauge to 1/4 in.
- 10-ft. gun assembly and work cable with clamp. Wt. 59 lbs.

009-20502

**G 40-225  
AMP RANGE**



**G. Lincoln<sup>®</sup> AC/DC 225/125 Arc Welder**

- Welds carbon, low alloy and stainless.
- Welds 16-gauge and heavier steel.
- Uses electrodes up to 3/16 in.
- Model K1297. Wt. 129 lbs.

009-20012N♦

**H 5-95  
AMP RANGE**



**TIG WELDERS**

- Precision welds.
- Less cracking during welding.
- Custom projects.
- Aluminum and steel.

Catalog/Online EXCLUSIVE  
**H. ThermalArc<sup>®</sup> 95S DC Stick Welder**

- Features thermal overload protection, twist lock output terminals, 115V AC primary cable and plug.
- Single amperage range allows easy, accurate settings. Wt. 22 lbs.

009-81134

**J 3/8-IN.  
RATED CUT**



**PLASMA CUTTERS**

- Professional cutting.
- More precise than a torch.
- Prototyping.
- Body shops.
- Light construction.

Catalog/Online EXCLUSIVE  
**J. Hobart<sup>®</sup> AirForce<sup>™</sup> 500i #500548**

- 10-ft. power cord with multi-voltage plugs: (1) 115 VAC-15 amp and (1) 230 VAC-50 amp plug adapter.
- 5/8-in. max. cut.
- Built-in gas/air filter and regulator. Wt. 32.6 lbs.

009-81136

♦ See "N" suffix note on page 134a.





Catalog/Online EXCLUSIVE

**A. Craftsman® 107-Piece Carbon Steel Tap and Die Set**  
• Wt. 18.6 lbs.  
009-52386

**75-Piece Carbon Steel Tap and Die Set**  
Wt. 9.5 lbs  
009-52377

**39-Piece Inch Set in Blow-Molded Case**  
Wt. 4.25 lbs.  
009-52382

**39-Piece Metric Set in Blow-Molded Case**  
Wt. 5 lbs.  
009-52383

Catalog/Online EXCLUSIVE

**B. GearWrench® 114-Piece Carbon Steel Tap and Die Set**  
• Twist-lock guide; auto-lock feature for safe removal of tap adapter; reversible lever with 5-degree ratcheting arc.  
Wt. 20 lbs.  
009-87680

**65-Piece Inch Ratcheting Tap and Die Set** Wt. 12.3 lbs.  
009-23045

**65-Piece Metric Tap and Die Set** Wt. 11.8 lbs.  
009-23046

**A. 107-PIECE CRAFTSMAN CARBON STEEL TAP AND DIE SET**

- 48 Inch Taps/Dies
- 46 Metric Taps/Dies
- 2 Die Stocks
- 1 T-Handle Wrench
- 2 Tap Reamer Wrenches
- 2 Thread Gauges
- 5 Screw Extractors
- 1 Screwdriver

**innovation**

- rust-resistant finish for a smoother cut
- carbon steel surfaces make chip removal easy

**15**

**B**

**B. 114-PIECE GEARWRENCH® CARBON STEEL TAP AND DIE SET**

- 48 Inch Taps/Dies
- 48 Metric Taps/Dies
- 2 Ratcheting T-Wrenches
- 8 Adapters
- 5 Screw Extractors
- 2 Thread Gauges
- 1 Hex Key

**C**

**GEARWRENCH**

**C. Craftsman 48-Piece Inch and Metric Master Rethreading Set**

- 6 National Course Taps, 7 National Course Dies, 6 National Fine Taps, 7 National Fine Dies, 10 Metric Taps, 10 Metric Dies
- One Inch Rethread File, 8 sizes: 11 thru 14, 16, 18, 20, 24 tpi.
- One Metric Rethread File, 8 sizes: .75, 1, 1.25, 1.5, 1.75, 2, 2.5, 3 mm tpi. Wt. 4.7 lbs.

009-42275

**D**

**D**

**D. Craftsman Stainless Steel Magnetic Tray**

- Raised sides keep small tools/parts in place.
  - Magnets keep bolts/screws in easy reach.
  - Great for home or shop. Wt. 2 lbs.
- 009-41329

**E**

**E. Craftsman Magnetic Steel Bowl**

- Great for shop or home; provides easy access for small tools and parts.
  - Stainless steel construction. Wt. 0.4 lb.
- 009-41328

**F**

Catalog/Online EXCLUSIVE

**F. Craftsman 4-Piece Dual Material Fold-Up Hex Key Set**

- Dual material grips for comfortable, non-slip grip.
  - Includes 9-piece inch, 8-piece metric, 7-piece Torx® and seven-piece tamper-proof Torx hex key sets.
  - Separate prices total \$52.97. Lifetime Warranty.\* Wt. 1.6 lbs.
- 009-46311

**G**

Catalog/Online EXCLUSIVE

**G. Craftsman 5-Pocket Fender Cover**

- Slip-resistant vinyl cleans up easily.
  - Protects finish from grime and scratches.
  - Keeps tools and parts close at hand.
- Wt. 1.6 lbs.  
009-51163